



MUSKOKA
ALGONQUIN
HEALTHCARE

REGIONAL HEALTH CARE TRANSFORMATION

Our new multi-site regional model will transform how health care services are delivered in communities, providing access to high-quality patient care across our region.



HOW WE'RE TRANSFORMING REGIONAL HEALTH CARE

- Doubling emergency department capacities
- Expanding square footage by 80%
- Expanding surgical services
- Creating clinics for women and seniors
- Maintaining a Level 2 ICU and adding a Level 3
- Developing Specialized Reactivation and Rehabilitation Units



TWO SIDES OF A HEART

These two complementary sites fit together like two sides of a human heart, the Bracebridge and Huntsville sites form one hospital, vital to the longevity of care in our community.

Working together, these two fully functional and interdependent future hospital sites will shape a healthier tomorrow for residents in Muskoka and area.

QUALITY OF CARE

The new regional model was built on the foundation of quality patient care. This approach to regional health care will transform how services are distributed, providing everyone in our region with continued access to high-quality care.

Consolidating expertise and resources from two sites will establish centres of excellence, enhancing the patient experience and quality of care.

Creating critical mass in our programs means more specialized care for patients and better patient outcomes, with staff and physicians able to focus on their area of specialty.

This data driven plan for local healthcare will provide sustainable and high-quality patient care in Muskoka and Area for years to come.





MUSKOKA ALGONQUIN
HEALTHCARE

SERVICES BY SITE

The layout and design of yesteryear isn't working now. The new, fresh, and innovative integrated regional approach will allow us to grow and adapt in the future to continue to provide high quality care.

BOTH SITES

- Expanded emergency departments
- Labour and delivery services
- ICU (Level 2 in Bracebridge, Level 3 in Huntsville)
- General Surgery (Inpatient and Outpatient)

The stroke centre is designated by the ministry of health and takes into consideration the entire catchment area and distance to travel. This requires an MRI and Rehabilitation. This led the decision making to create critical mass in Huntsville to ensure residents can get the care they need locally without having to travel out of the region.

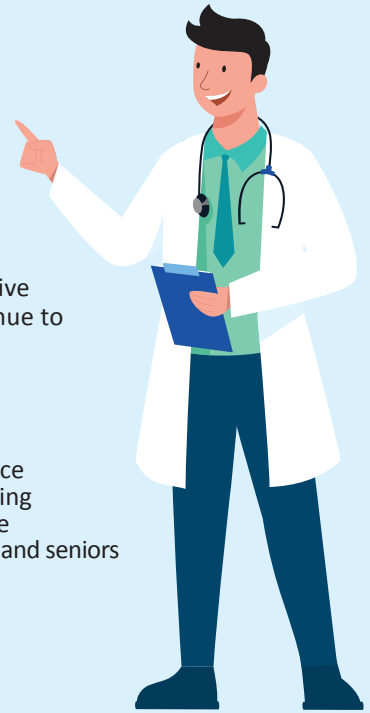
WHAT'S NEW?

BRACEBRIDGE SITE

- Surgical centre of excellence
- Enhanced diagnostic imaging
- Regional cancer care home
- Specialty clinics for women and seniors

HUNTSVILLE SITE

- Level 3 ICU
- Designated stroke unit
- Reactivation
- Rehabilitation



CARE BEDS BY THE NUMBERS



ACUTE CARE
0-6 Day Stay



HUNTSVILLE



BRACEBRIDGE

LONGER-STAY BEDS
HUNTSVILLE SITE



9

POST-LEVEL 3 ICU
LONGER-STAY



18

≥6DAY MEDICAL
REACTIVATION



14

ACUTE
REHABILITATION



37

ACTIVATION (ALC)

ACUTE CARE BEDS



OBSTETRICS

2

HUNTSVILLE

1

BRACEBRIDGE



ICU

10

HUNTSVILLE
LEVEL 3

4

BRACEBRIDGE
LEVEL 2

